



SAMUEL WOOD

27 Lower Broad Street, Ludlow, Shropshire, SY8 1PQ

£850 Per Month



27 Lower Broad Street

Ludlow, Shropshire, SY8 1PQ

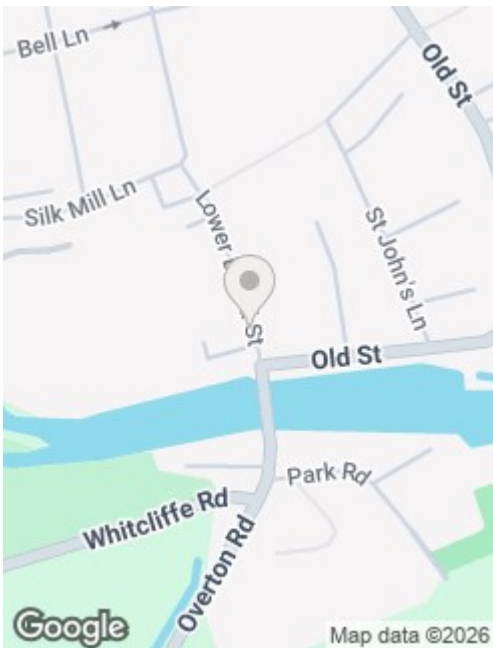
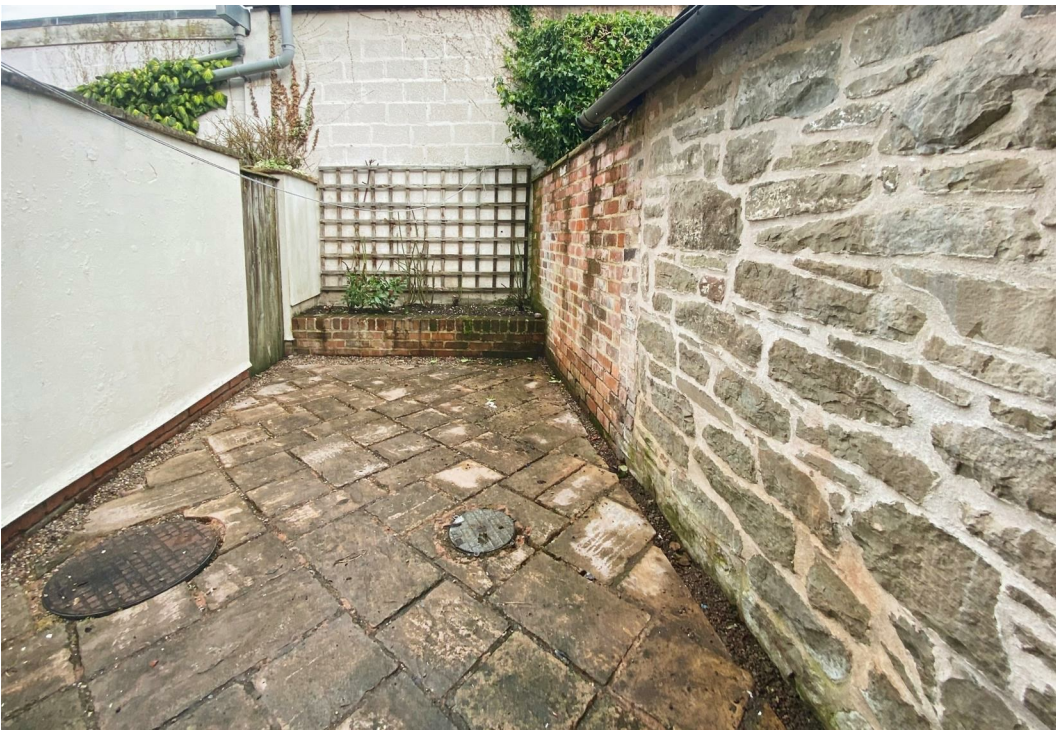


This 3 Storey Grade II listed Town House is located just off Ludlow's town centre in a desirable street. Accommodation which benefits from gas fired heating briefly includes Living Room, Hallway, Kitchen/Dining Room, First Floor Landing with Double Bedroom, Bathroom, Second Floor Landing with 2 further bedrooms. Outside the property has a small courtyard garden to rear. unfurnished

This 3 Storey Grade II listed Town House is located just off Ludlow's town centre in a desirable street. Accommodation which benefits from gas fired heating briefly includes Living Room, Hallway, Kitchen/Dining Room, First Floor Landing with Double Bedroom, Bathroom, Second Floor Landing with 2 further bedrooms. Outside the property has a small courtyard garden to rear.







Directions

Available on a min 12 month tenancy

Unfurnished.

No smoking/vaping.

No Pets.

EPC - D

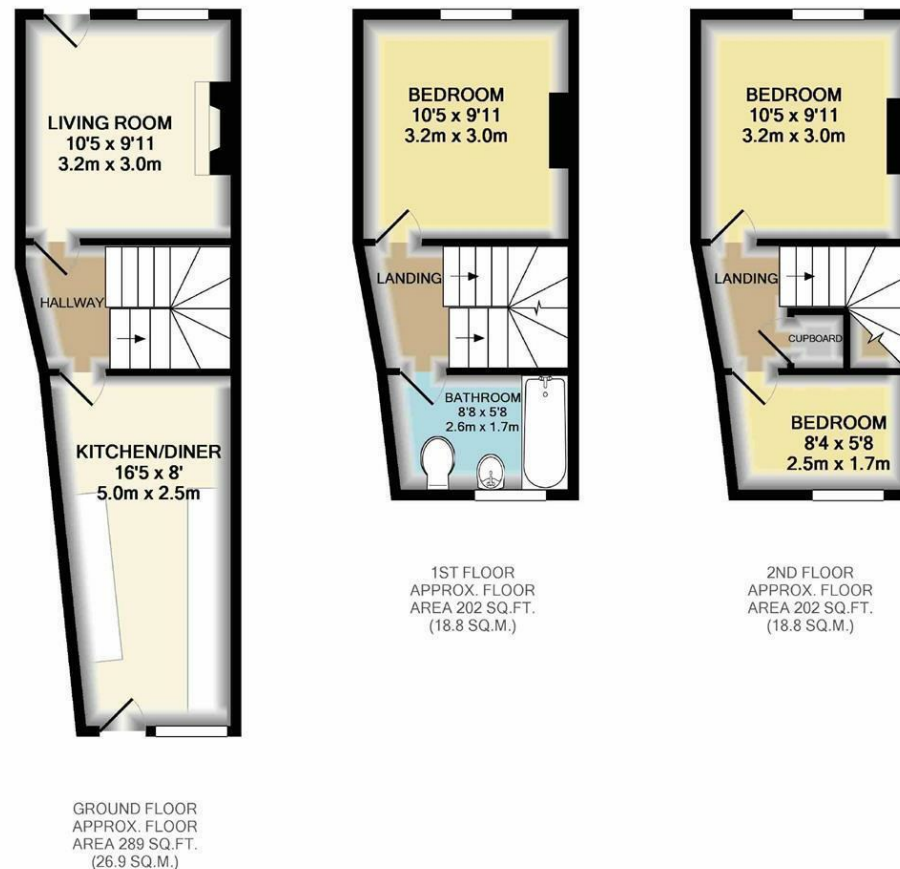
Council Tax Band – A

Utilities - mains gas, mains water, mains drainage

Parking situation – on street parking (please note Ludlow operates residents permit scheme. You can find more details on Shropshire Council website)







TOTAL APPROX. FLOOR AREA 693 SQ.FT. (64.4 SQ.M.)

Whilst every attempt has been made to ensure the accuracy of the floor plan contained here, measurements of doors, windows, rooms and any other items are approximate and no responsibility is taken for any error, omission, or mis-statement. This plan is for illustrative purposes only and should be used as such by any prospective purchaser. The services, systems and appliances shown have not been tested and no guarantee as to their operability or efficiency can be given

Made with Metropix ©2017

We take every care in preparing our sales details. They are checked and usually verified by the Vendor. We do not guarantee appliances, alarms, electrical fittings, plumbing, showers etc. You must satisfy yourself that they operate correctly. Room sizes are approximate; they are usually taken in metric and converted to imperial. Do not use them to buy carpets or furniture. We cannot verify the tenure, as we do not have access to the legal title; we cannot guarantee boundaries or rights of way so you must take the advice of your legal representative. No person in the employment of or representing Samuel Wood has any authority to make any representation or warranty whatever in relation to this property. If there is any point which is of particular importance to you, please contact the office and we will be pleased to check the information. Do so particularly if contemplating travelling some distance to view. Applicants are advised that the majority of our shots are taken with a wide angle lens.

CONTEMPORARY AGENCY • TRADITIONAL VALUES

2 Shoplatch, Shrewsbury, Shropshire, SY1 1HF

Tel: 01743 272710 | shrewsbury@samuelwood.co.uk